

Recombinant Human ALCAM/CD166 (His Tag)

产品信息

产品名称	产品编号	规格
Recombinant Human ALCAM/CD166 (His Tag)	94145ES25	25 µg
	94145ES60	100 µg
	94145ES76	500 µg
	94145ES80	1 mg

产品描述

ALCAM (activated leukocyte cell adhesion molecule), designated CD166, is a 100-110 kDa type I transmembrane glycoprotein and a member of the Ig CAM family within the immunoglobulin superfamily. ALCAM is expressed on thymic epithelium, microvascular endothelium, activated lymphocytes and monocytes, and monocyte-derived dendritic cells. Human ALCAM cDNA encodes 583 amino acid (aa), including signal peptide (27 aa), extracellular domain (ECD, 500 aa) with two V-type and three C2-type Ig-like domains, transmembrane (22 aa) and cytoplasmic (34 aa) domains. A secreted isoform in endothelial cells that is truncated at aa 133 (sALCAM) antagonizes full-length ALCAM. ALCAM mediates low-affinity adhesion with itself or the cysteine-rich scavenger receptor CD6 to regulate T cell development, immunological synapses (IS), and cell migration through endothelial junctions. ALCAM on thymic epithelia mediates adhesion to CD6 on CD4+CD8+ T cells. Adhesion of ALCAM-expressing antigen presenting cells and CD6-expressing T cells stabilizes the early IS, while later it enhances CD3 effects on T cell proliferation, CD25 expression, and Th1 commitment. High ALCAM expression at the blood-brain barrier in active multiple sclerosis, and its mouse model (EAE), promotes leukocyte migration to the brain. High ALCAM expression on melanoma cell lines appears to be pro-metastatic, but anti-metastatic activity has been reported in breast cancer.

产品性质

别名	CD166; ALCAM; MEMD; CD6L; KG-CAM
Uniprot No.	Q13740.1
表达区间及表达系统	Recombinant Human ALCAM/CD166 Protein is expressed from HEK293 Cells with His tag at the C-terminal. It contains Trp28-Ala526.
分子量	Approximately 57 kDa. Due to glycosylation, the protein migrates to 60-80 kDa based on Tris-Bis PAGE result.
纯度	> 95% as determined by SDS-PAGE and HPLC.
活性	ELISA Data: Immobilized Human ALCAM, His Tag at 2µg/ml (100µl/Well) on the plate. Dose response curve for Anti-ALCAM Antibody, hFc Tag with the EC50 of 0.7µg/ml determined by ELISA.
内毒素	< 1.0 EU per 1µg of the protein by the LAL method.
制剂	Lyophilized from 0.22 µm filtered solution in PBS (pH 7.4). Normally 8% trehalose is added as protectant before lyophilization.
复溶	Centrifuge tubes before opening. Reconstituting to a concentration more than 100 µg/mL is recommended (usually we use 1 mg/mL solution for lyophilization). Dissolve the lyophilized protein in distilled water.

运输与保存方法

冰袋运输。-20°C至-80°C保存，一年有效期。

复溶后，-20 至 -80°C，在未开封状态下保存 3-6 个月。复溶后，2-8°C 保存 2-7 天。

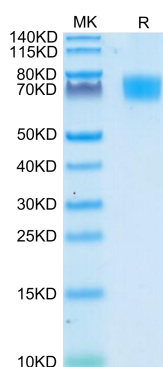
建议第一次使用时分装冻存，避免反复冻融。

注意事项

1. 避免反复冻融。
2. 为了您的安全和健康，请穿实验服并戴一次性手套操作。
3. 本产品仅作科研用途！

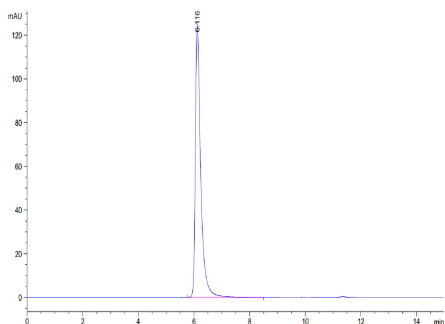
产品数据

Tris-Bis PAGE



Human ALCAM on Tris-Bis PAGE under reduced condition. The purity is greater than 95%.

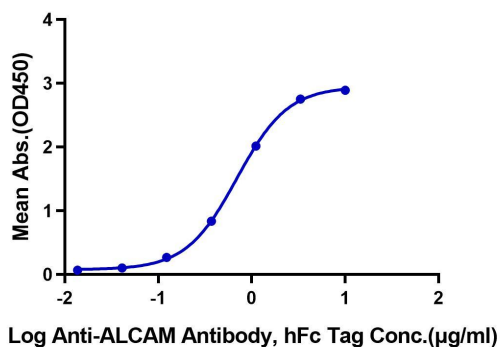
SEC-HPLC



The purity of Human ALCAM is greater than 95% as determined by SEC-HPLC.

ELISA Data

Human ALCAM, His Tag ELISA
0.2µg Human ALCAM, His Tag Per Well



Immobilized Human ALCAM, His Tag at 2µg/ml (100µl/Well) on the plate. Dose response curve for Anti-ALCAM Antibody, hFc Tag with the EC50 of 0.7µg/ml determined by ELISA.