

## Recombinant Human TREM2 (His Tag)

### 产品信息

产品名称	产品编号	规格
Recombinant Human TREM2 (His Tag)	93778ES25	25 µg
	93778ES60	100 µg
	93778ES76	500 µg
	93778ES80	1 mg

### 产品描述

TREM-2 (Triggering Receptor Expressed on Myeloid cells-2) is a 35 kDa type I transmembrane member of the TREM family and Ig superfamily. TREM-2 is expressed on macrophages, immature myeloid dendritic cells, osteoclasts, microglia, and adipocytes. It promotes the differentiation and function of osteoclasts, the production of inflammatory cytokines by adipocytes, insulin resistance, and the phagocytic clearance of bacteria. In the CNS, TREM-2 binds to ApoE, ApoA1, and ApoB and mediates the clearance of apoptotic neurons, amyloid plaques, and cell debris following demyelination. TREM-2 also interacts with and modifies signaling through Plexin A1 on dendritic cells and osteoclasts. Mutations in TREM-2 or DAP12 are associated with the development of Alzheimer's disease and Nasu-Hakola disease (NHD/PLOSL) which is characterized by presenile dementia and bone cysts. Soluble TREM-2 is elevated in cerebrospinal fluid of patients with active multiple sclerosis (MS), and TREM-2 blockade exacerbates disease symptoms in the experimental EAE model of MS.

### 产品性质

别名	PLOSL2; TREM2; TREM-2; Trem2a; Trem2b; Trem2c
Accession	Q9NZC2.1
表达区间及表达系统	Recombinant TREM2 Protein is expressed from HEK293 Cells with His tag at the C-terminal. It contains His19-Ser174.
分子量	Approximately 18.5 kDa. Due to glycosylation, the protein migrates to 28-40 kDa based on Tris-Bis PAGE result.
纯度	> 95% as determined by SDS-PAGE.
活性	<b>ELISA Data:</b> Immobilized Human TREM2, His Tag at 2µg/ml (100µl/well) on the plate. Dose response curve for Anti-TREM-2 Antibody, hFc Tag with the EC50 of 28.6ng/ml determined by ELISA.
内毒素	< 1.0 EU per 1µg of the protein by the LAL method.
制剂	Lyophilized from 0.22 µm filtered solution in PBS (pH 7.4). Normally 5% trehalose is added as protectant before lyophilization.
复溶	Centrifuge tubes before opening. Reconstituting to a concentration more than 100 µg/mL is recommended (usually we use 1 mg/mL solution for lyophilization). Dissolve the lyophilized protein in distilled water.

### 运输与保存方法

冰袋运输。-20°C至-80°C保存，一年有效期。

复溶后，-20 至 -80°C，在未开封状态下保存 3-6 个月。复溶后，2-8°C 保存 2-7 天。

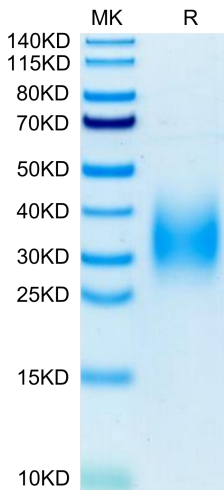
建议第一次使用时分装冻存，避免反复冻融。

## 注意事项

1. 避免反复冻融。
2. 为了您的安全和健康，请穿实验服并戴一次性手套操作。
3. 本产品仅作科研用途！

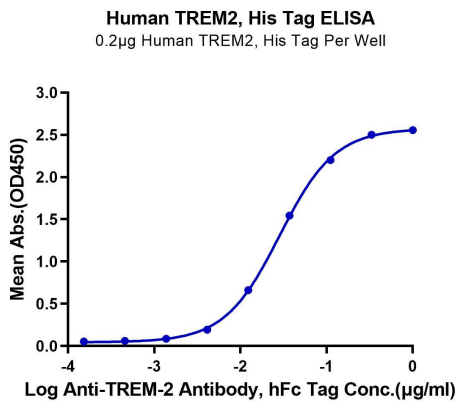
## 产品数据

### Tris-Bis PAGE



Human TREM2 on Tris-Bis PAGE under reduced condition. The purity is greater than 95%.

### ELISA Data



Immobilized Human TREM2, His Tag at 2 $\mu$ g/ml (100 $\mu$ l/well) on the plate. Dose response curve for Anti-TREM-2 Antibody, hFc Tag with the EC50 of 28.6ng/ml determined by ELISA.