

Recombinant Human CD160 (His-Avi Tag)

产品信息

产品名称	产品编号	规格
Recombinant Human CD160 (His-Avi Tag)	93585ES25	25 µg
	93585ES60	100 µg
	93585ES76	500 µg
	93585ES80	1 mg

产品描述

CD160 (also Natural killer cell receptor BY55) is a 27-30 kDa member of the Ig superfamily. In human, it is expressed principally on nonmyeloid hematopoietic cells. These include CD56DIMCD16+ cytolytic NK cells, CD8+CD28- T cells, CD8+CD101+ IELs, NKT cells, gamma δ TCR T cells, activated CD4+ T cells, and vascular endothelial cells. CD160 was initially identified as a GPI-linked glycoprotein. It is synthesized as a preproprotein that is 181 amino acids (aa) in length. The precursor contains a 26 aa signal sequence, a 133 aa mature molecule that shows one 96 aa V-type Ig-like domain (aa 27-122), and a 22 aa prosegment that is cleaved to generate a GPI-linkage at Ser159. GPI-linked CD160 is known to be cleaved by phospholipases and these generate an 80 kDa (presumably trimeric) band in SDS-PAGE. Alternative splice forms for CD160 are reported to exist on activated NK cells. The principal variant is an extended type I transmembrane (TM) protein that shows a 55 aa substitution for the C-terminal two amino acids. It contains a 23 aa TM segment (aa 160-182) and a 52 aa cytoplasmic region. Two other variants show deletions of the Ig-like domain in both the GPI-linked and TM form .

产品性质

别名	CD160; BY55; BY55FLJ46513; NK1; NK28
Uniprot No.	O95971
表达区间及表达系统	Recombinant Human CD160 Protein is expressed from HEK293 Cells with His tag and Avi tag at the C-terminal. It contains Gly25-Leu158.
分子量	Approximately 17.7 kDa. Due to glycosylation, the protein migrates to 27-33 kDa based on Tris-Bis PAGE result.
纯度	> 95% as determined by SDS-PAGE and HPLC.
活性	SPR Data: Human HVEM captured on Protein A chip, can bind Human CD160, His Tag with an affinity constant of 1.2µM as determined in a SPR assay (Biacore T200).
内毒素	< 1.0 EU per 1µg of the protein by the LAL method.
制剂	Lyophilized from 0.22 µm filtered solution in PBS (pH 7.4). Normally 5% trehalose is added as protectant before lyophilization.
复溶	Centrifuge tubes before opening. Reconstituting to a concentration more than 100 µg/mL is recommended (usually we use 1 mg/mL solution for lyophilization). Dissolve the lyophilized protein in distilled water.

运输与保存方法

冰袋运输。-20°C至-80°C保存，一年有效期。

复溶后，-20 至 -80°C，在未开封状态下保存 3-6 个月。复溶后，2-8°C 保存 2-7 天。

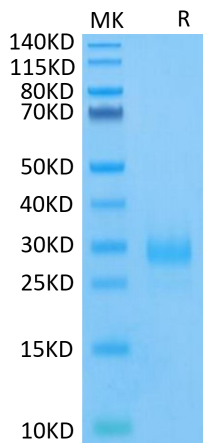
建议第一次使用时分装冻存，避免反复冻融。

注意事项

1. 避免反复冻融。
2. 为了您的安全和健康，请穿实验服并戴一次性手套操作。
3. 本产品仅作科研用途！

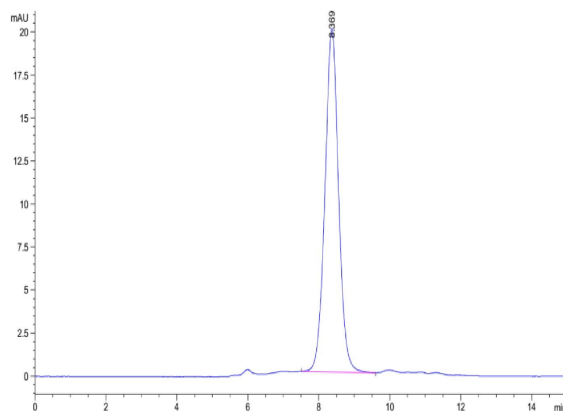
产品数据

Tris-Bis PAGE



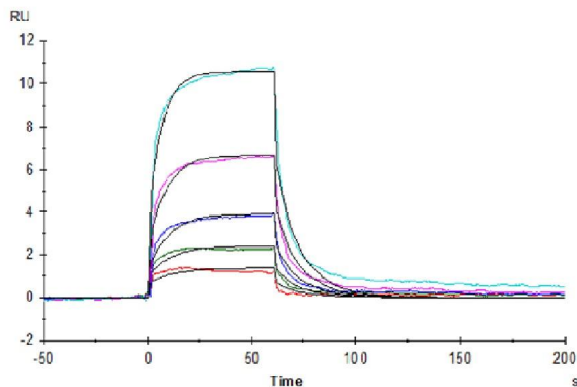
Human CD160 on Tris-Bis PAGE under reduced condition. The purity is greater than 95%.

SEC-HPLC



The purity of Human CD160 is greater than 95% as determined by SEC-HPLC.

SPR Data



Human HVEM captured on Protein A chip, can bind Human CD160, His Tag with an affinity constant of $1.2\mu\text{M}$ as determined in a SPR assay (Biacore T200).