

Recombinant Human CD3E/CD3 epsilon (His Tag)

产品信息

产品名称	产品编号	规格
Recombinant Human CD3E/CD3 epsilon (His Tag)	93344ES25	25 µg
	93344ES60	100 µg
	93344ES76	500 µg
	93344ES80	1 mg

产品描述

CD3 epsilon (T-Cell Surface Glycoprotein CD3 Epsilon) is a type I transmembrane protein that belongs to the Ig (Immunoglobulin) superfamily. Human CD3 epsilon consists of 104 amino acid (aa) extracellular domain, 26 aa transmembrane domain and 55 aa cytoplasmic domain. There are four CD3 proteins: CD3δ, CD3 epsilon, CD3 gamma, and CD3 zeta. All CD3 proteins contain ITAM (Immunoreceptor Tyrosine-based Activation Motifs) in the cytoplasmic tail, which becomes phosphorylated by Src family protein tyrosine kinases LCK and FYN upon TCR engagement. CD3 proteins form heterodimers of CD3δ/CD3 epsilon and CD3 gamma /CD3 epsilon, which bind to TCR and form trimeric TCR alpha /CD3 epsilon /CD3 gamma and TCR beta /CD3 gamma /CD3 epsilon. The resulting heterohexamer further associates with CD3 zeta homodimer and forms TCR/CD3 signaling complex. Similar complex is also formed with TCR gamma and TCRδ. CD3 epsilon plays essential role in adaptive immune response. Mutations in CD3 epsilon lead to SCID (severe combined immunodeficiency).

产品性质

别名	CD3e; CD3E; T3E; FLJ18683; TCRE; CD3-epsilon; IMD18
Uniprot No.	P07766
表达区间及表达系统	Recombinant Human CD3E/CD3 epsilon Protein is expressed from HEK293 Cells with His tag at the C-terminal. It contains Asp23-Asp126.
分子量	Approximately 12.6 kDa. Due to glycosylation, the protein migrates to 15 kDa based on Tris-Bis PAGE result.
纯度	> 95% as determined by SDS-PAGE.
活性	ELISA Data: Immobilized Human CD3E, His Tag at 1µg/ml (100µl/well) on the plate. Dose response curve for Anti-CD3 Antibody, hFc Tag with the EC50 of 9.1ng/ml determined by ELISA.
内毒素	< 1.0 EU per 1µg of the protein by the LAL method.
制剂	Lyophilized from 0.22 µm filtered solution in PBS (pH 7.4). Normally 5% trehalose is added as protectant before lyophilization.
复溶	Centrifuge tubes before opening. Reconstituting to a concentration more than 100 µg/mL is recommended (usually we use 1 mg/mL solution for lyophilization). Dissolve the lyophilized protein in distilled water.

运输与保存方法

冰袋运输。-20°C至-80°C保存，一年有效期。

复溶后，-20 至 -80°C，在未开封状态下保存 3-6 个月。复溶后，2-8°C 保存 2-7 天。

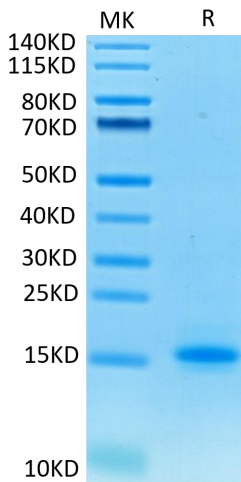
建议第一次使用时分装冻存，避免反复冻融。

注意事项

1. 避免反复冻融。
2. 为了您的安全和健康，请穿实验服并戴一次性手套操作。
3. 本产品仅作科研用途！

产品数据

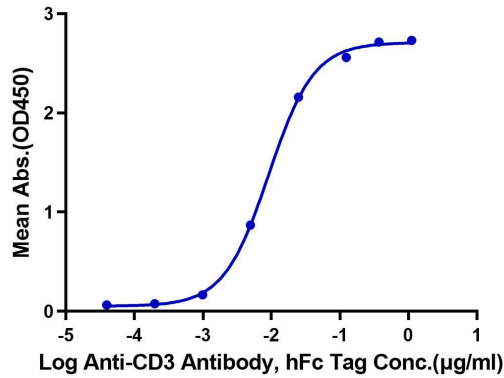
Tris-Bis PAGE



Human CD3E on Tris-Bis PAGE under reduced condition. The purity is greater than 95%.

ELISA Data

Human CD3E, His Tag ELISA
0.1 μ g Human CD3E, His Tag Per Well



Immobilized Human CD3E, His Tag at 1 μ g/ml (100 μ l/well) on the plate. Dose response curve for Anti-CD3 Antibody, hFc Tag with the EC50 of 9.1ng/ml determined by ELISA.