

Recombinant Human EpCAM/TROP1 (hFc Tag)

产品信息

产品名称	产品编号	规格
Recombinant Human EpCAM/TROP1 (hFc Tag)	93124ES25	25 µg
	93124ES60	100 µg
	93124ES76	500 µg
	93124ES80	1 mg

产品描述

Epithelial Cellular Adhesion Molecule (EpCAM), also known as KS1/4, gp40, GA733-2, 17-1A, and TROP-1, is a 40 kDa transmembrane glycoprotein that consists of a 242 amino acid (aa) extracellular domain with two EGF-like repeats, a 23 aa transmembrane segment, and a 26 aa cytoplasmic domain. During embryonic development, EpCAM is detected in fetal lung, kidney, liver, pancreas, skin, and germ cells. In adults, human EpCAM is expressed on basolateral cell membranes of all simple, pseudo-stratified, and transitional epithelia but not on normal squamous stratified epithelia, mesenchymal tissue, muscular tissue, neuro-endocrine tissue, or lymphoid tissue. It is additionally expressed on undifferentiated embryonic stem cells, thymocytes, and dendritic cells. It is up-regulated on actively proliferating epithelial tissues, during adult liver regeneration, and on many epithelial cell-derived carcinomas. EpCAM functions as a homophilic cell adhesion molecule. It associates into tetramers and forms complexes in cis with Claudin-7, CD44v6, TSPAN8, CD9, Integrin alpha 3, and Annexin A1 that can interfere with cell adhesion. Proteolytic cleavage of EpCAM releases multiple fragments from the ECD as well as a cytoplasmic fragment that can regulate gene transcription.

产品性质

别名	CD326; EGP; EGP-2; EGP314; EGP40; EpCAM; ACSTD1; DIAR5; gp40; HNPCC8; MOC31; TACST-1; TACSTD1; TROP1; ESA; KSA; MIC18; MK1
Uniprot No.	P16422
表达区间及表达系统	Recombinant Human EpCAM/TROP1 Protein is expressed from HEK293 Cells with hFc tag at the C-terminal. It contains Gln24-Lys245.
分子量	Approximately 54.2 kDa. Due to glycosylation, the protein migrates to 60-70 kDa based on Tris-Bis PAGE result.
纯度	> 95% as determined by SDS-PAGE and HPLC.
活性	ELISA Data: Immobilized Human EpCAM, hFc Tag at 1µg/ml (100µl/well) on the plate. Dose response curve for Biotinylated Anti-EpCAM Antibody, hFc Tag with the EC50 of 18.9ng/ml determined by ELISA.
内毒素	< 1.0 EU per 1µg of the protein by the LAL method.
制剂	Lyophilized from 0.22µm filtered solution in PBS (pH 7.4). Normally 5% trehalose is added as protectant before lyophilization.
复溶	Centrifuge tubes before opening. Reconstituting to a concentration more than 100 µg/mL is recommended (usually we use 1 mg/mL solution for lyophilization). Dissolve the lyophilized protein in distilled water.

运输与保存方法

冰袋运输。-20°C至-80°C保存，一年有效期。

复溶后，-20 至 -80°C，在未开封状态下保存 3-6 个月。复溶后，2-8°C 保存 2-7 天。

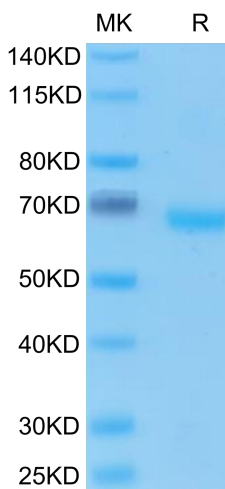
建议第一次使用时分装冻存，避免反复冻融。

注意事项

1. 避免反复冻融。
2. 为了您的安全和健康，请穿实验服并戴一次性手套操作。
3. 本产品仅作科研用途！

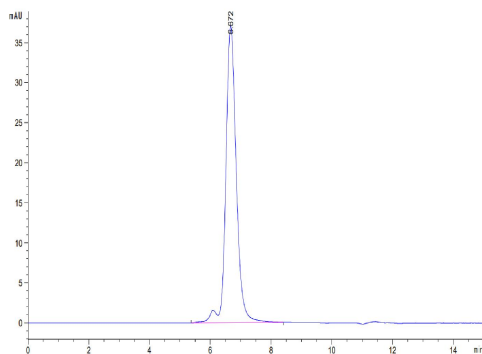
产品数据

Tris-Bis PAGE



Human EpCAM on Tris-Bis PAGE under reduced condition. The purity is greater than 95%.

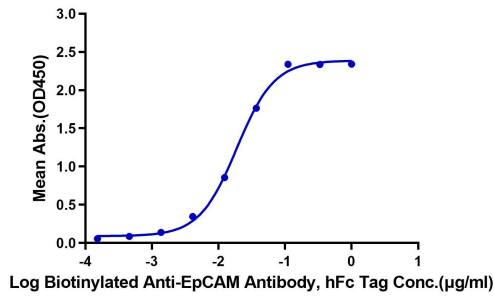
SEC-HPLC



The purity of Human EpCAM is greater than 95% as determined by SEC-HPLC.

ELISA Data

Human EpCAM, hFc Tag ELISA
0.1 μ g Human EpCAM, hFc Tag Per Well



Immobilized Human EpCAM, hFc Tag at 1 μ g/ml (100 μ l/well) on the plate. Dose response curve for Biotinylated Anti-EpCAM Antibody, hFc Tag with the EC50 of 18.9ng/ml determined by ELISA.