

Recombinant Human CD38 (hFc Tag)

产品信息

产品名称	产品编号	规格
Recombinant Human CD38 (hFc Tag)	93115ES25	25 µg
	93115ES60	100 µg
	93115ES76	500 µg
	93115ES80	1 mg

产品描述

CD38, also known as ADP-ribosyl cyclase, is a Type II integral membrane protein. The enzyme is able to transform NAD(P)⁺ into three different products with calcium mobilizing ability, cyclic ADP-ribose, NAADP⁺, and ADP-ribose. CD38 is expressed in B and T lymphocytes, osteoclasts, and in cardiac, pancreatic, liver and kidney cells. Through its production of cyclic ADP-ribose, CD38 modulates calcium-mediated signal transduction in many types of cells, including neutrophils and pancreatic beta cells.

产品性质

别名	ADPRC 1; T10; CD38; ADP-ribosyl cyclase 1; cADPr hydrolase 1; CD38 molecule; EC 2.4.99.20; EC 3.2.2.6
Uniprot No.	P28907.1
表达区间及表达系统	Recombinant Human CD38 Protein is expressed from HEK293 Cells with hFc tag at the C-terminal. It contains Val43-Ile300.
分子量	Approximately 56.6 kDa. Due to glycosylation, the protein migrates to 60-70 kDa based on Tris-Bis PAGE result.
纯度	> 95% as determined by SDS-PAGE and HPLC.
活性	ELISA Data: Immobilized Human CD38, hFc Tag at 0.5µg/ml (100µl/well) on the plate. Dose response curve for Biotinylated Anti-CD38 Antibody, hFc Tag with the EC50 of 17.4ng/ml determined by ELISA.
内毒素	< 1.0 EU per 1µg of the protein by the LAL method.
制剂	Lyophilized from 0.22 µm filtered solution in PBS (pH 7.4). Normally 5% trehalose is added as protectant before lyophilization.
复溶	Centrifuge tubes before opening. Reconstituting to a concentration more than 100 µg/mL is recommended (usually we use 1 mg/mL solution for lyophilization). Dissolve the lyophilized protein in distilled water.

运输与保存方法

冰袋运输。-20°C至-80°C保存，一年有效期。

复溶后，-20 至 -80°C，在未开封状态下保存 3-6 个月。复溶后，2-8°C 保存 2-7 天。

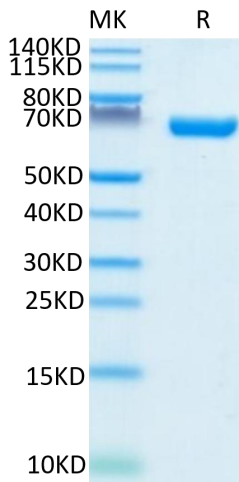
建议第一次使用时分装冻存，避免反复冻融。

注意事项

1. 避免反复冻融。
2. 为了您的安全和健康，请穿实验服并戴一次性手套操作。
3. 本产品仅作科研用途！

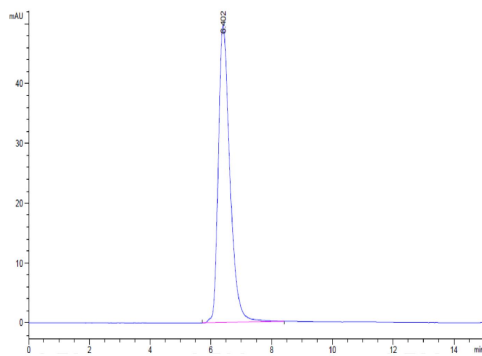
产品数据

Tris-Bis PAGE



Human CD38 on Tris-Bis PAGE under reduced condition. The purity is greater than 95%.

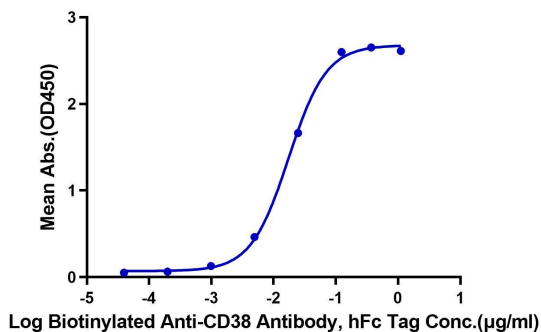
SEC-HPLC



The purity of Human CD38 is greater than 95% as determined by SEC-HPLC.

ELISA Data

Human CD38, hFc Tag ELISA
0.05 μ g Human CD38, hFc Tag Per Well



Immobilized Human CD38, hFc Tag at 0.5 μ g/ml (100 μ l/well) on the plate. Dose response curve for Biotinylated Anti-CD38 Antibody, hFc Tag with the EC₅₀ of 17.4ng/ml determined by ELISA.