

Recombinant Human APOE / Apolipoprotein E (His Tag)

产品信息

产品名称	产品编号	规格
Recombinant Human APOE / Apolipoprotein E (His Tag)	93486ES20	20 µg
	93486ES60	100 µg
	93486ES76	500 µg
	93486ES80	1 mg

产品描述

ApoE is a major protein component of serum LDL, VLDL, HDL, and chylomicrons. It is produced predominantly by hepatocytes, macrophages, and non-neuronal cells in the CNS. ApoE-containing particles transport triglycerides and cholesterol to peripheral tissues for cellular uptake and catabolism. Mature human ApoE is a 37 kDa glycoprotein. ApoE3 is the most abundant of the three common alleles in human; ApoE2 and ApoE4 differ by single aa substitutions. Mature human ApoE shares 71% aa sequence identity with mouse and rat ApoE. ApoE3 dampens the TNF-alpha induced inflammatory response in vascular endothelial cells.

产品性质

别名 (Synonyms)	Apolipoprotein E, Apo-E, APOE, apolipo E
Uniprot No.	P02649-1
表达区间及表达系统 (Source)	Recombinant Human APOE / Apolipoprotein E Protein is expressed from HEK293 Cells with His tag at the N-terminal. It contains Lys19-His317.
分子量(Molecular Weight)	Approximately 35.3 kDa. Due to glycosylation, the protein migrates to 35-40 kDa based on Tris-Bis PAGE result.
外观(Physical Appearance)	Sterile Filtered White lyophilized (freeze-dried) powder.
纯度 (Purity)	> 95% as determined by SDS-PAGE
活性 (Activity)	<p>1. SPR Data: Human TREM2, hFc Tag captured on CM5 Chip via Protein A can bind Human APOE, His Tag with an affinity constant of 1.004 µM as determined in SPR assay (Biacore T200).</p> <p>2. SPR Data: Human LILRB4, hFc Tag captured on CM5 Chip via Protein A can bind Human APOE, His Tag with an affinity constant of 115.9 nM as determined in SPR assay (Biacore T200).</p>
内毒素 (Endotoxin)	< 1.0 EU per 1µg of the protein by the LAL method.
制剂 (Formulation)	Lyophilized from 0.22 µm filtered solution in PBS (pH 7.4). Normally 5% trehalose is added as protectant before lyophilization.
复溶 (Reconstitution)	Centrifuge tubes before opening. Reconstituting to a concentration more than 100 µg/mL is recommended (usually we use 1 mg/mL solution for lyophilization). Dissolve the lyophilized protein in distilled water.

运输与保存方法

冰袋运输。-20°C至-80°C保存，一年有效期。

复溶后，-20 至 -80°C，在未开封状态下保存 3-6 个月。复溶后，2-8°C 保存 2-7 天。

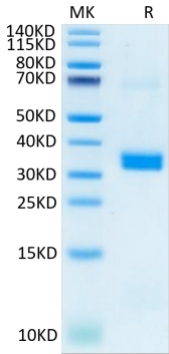
建议第一次使用时分装冻存，避免反复冻融。

注意事项

1. 避免反复冻融。
2. 为了您的安全和健康，请穿实验服并戴一次性手套操作。
3. 本产品仅作科研用途！

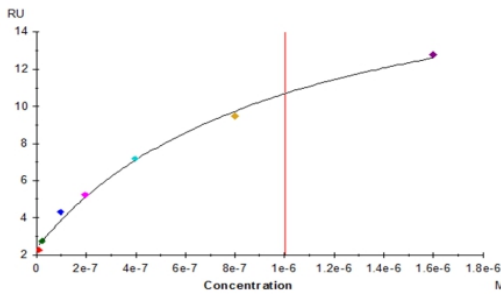
产品数据

Tris-Bis PAGE



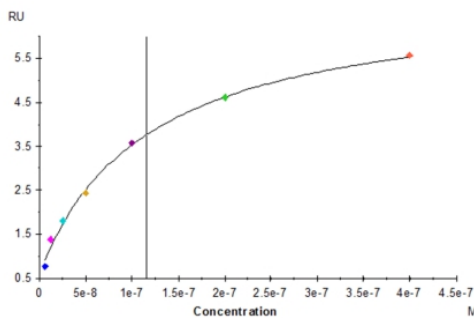
Human APOE on Tris-Bis PAGE under reduced condition.
 The purity is greater than 95%.

SPR Data



Human TREM2, hFc Tag captured on CM5 Chip via Protein A can bind Human APOE, His Tag with an affinity constant of 1.004 μ M as determined in SPR assay (Biacore T200).

SPR Data



Human LILRB4, hFc Tag captured on CM5 Chip via Protein A can bind Human APOE, His Tag with an affinity constant of 115.9 nM as determined in SPR assay (Biacore T200).