

Recombinant Human PD-L1/B7-H1 (His Tag)

产品信息

产品名称	产品编号	规格
Recombinant Human PD-L1/B7-H1 (His Tag)	93559ES20	20 µg
	93559ES60	100 µg
	93559ES76	500 µg
	93559ES80	1 mg

产品描述

PD-L1, also known as B7-H1, PDL1, is one of the ligands for PD-1 and plays a critical role in the regulation of T cell immunity. The PD-L1 protein is an approximately 65 kDa transmembrane glycoprotein belonging to the B7 family of immune regulatory molecules. Mature human PD-L1 protein consists of a 220 amino acid (aa) extracellular domain (ECD) with two immunoglobulin-like domains, a 21 aa transmembrane segment, and a 31 aa cytoplasmic domain. Within the ECD, human PD-L1 shares 73% and 74% aa sequence identity with mouse and rat B7-H1, respectively. PD-L1 provides a molecular stop signal to the adaptive immune system helping to distinguish between self and foreign antigens. PD-L1 also plays a role in the development of immune tolerance by promoting T cell anergy and enhancing regulatory T cell development.

产品性质

别名 (Synonyms)	CD274, PDL1, PD-L1/B7 homolog 1, B7-H, B7H1, B7-H1, PDCD1L1, PDCD1LG1
Uniprot No.	Q9NZQ7-1
表达区间及表达系统 (Source)	HEK293 Cells-derived Human PD-L1 / B7-H1 Protein, Phe19-Arg238 with His tag at the C-terminal
分子量(Molecular Weight)	Approximately 26.0 kDa. Due to glycosylation, the protein migrates to 35-42 kDa based on Tris-Bis PAGE result.
外观(Physical Appearance)	Sterile Filtered White lyophilized (freeze-dried) powder.
纯度 (Purity)	> 95% as determined by SDS-PAGE and HPLC
活性 (Activity)	ELISA Data: Immobilized Human PD-L1, His Tag at 0.5 µg/mL (100 µL/Well). Dose response curve for Anti-PD-L1 Ab., hFc Tag with the EC ₅₀ of 6.1 ng/mL determined by ELISA.
内毒素 (Endotoxin)	< 1.0 EU per 1µg of the protein by the LAL method.
制剂 (Formulation)	Lyophilized from 0.22 µm filtered solution in PBS (pH 7.4). Normally 5% trehalose is added as protectant before lyophilization.
复溶 (Reconstitution)	Centrifuge tubes before opening. Reconstituting to a concentration more than 100 µg/mL is recommended (usually we use 1mg/mL solution for lyophilization). Dissolve the lyophilized protein in distilled water.

运输与保存方法

冰袋运输。-20°C至-80°C保存，一年有效期。

复溶后，-20 至 -80°C，在未开封状态下保存 3-6 个月。复溶后，2-8°C 保存 2-7 天。

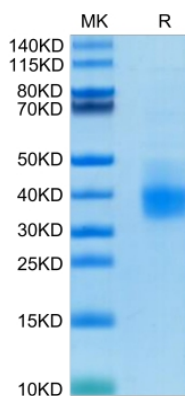
建议第一次使用时分装冻存，避免反复冻融。

注意事项

1. 避免反复冻融。
2. 为了您的安全和健康，请穿实验服并戴一次性手套操作。
3. 本产品仅作科研用途！

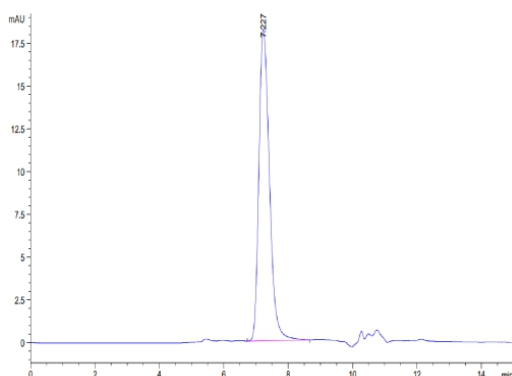
产品数据

Tris-Bis PAGE



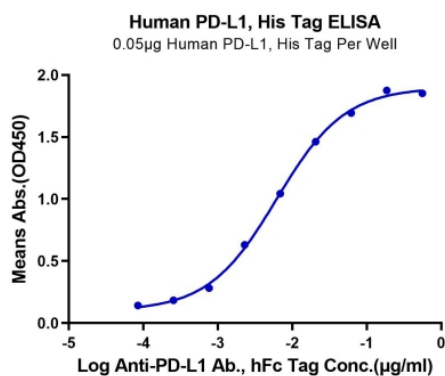
Human PD-L1 on Tris-Bis PAGE under reduced condition.
The purity is greater than 95%.

SEC-HPLC



The purity of Human PD-L1 is greater than 95% as determined by SEC-HPLC.

ELISA Data



Immobilized Human PD-L1, His Tag at 0.5 μ g/mL (100 μ L/Well).
Dose response curve for Anti-PD-L1 Ab., hFc Tag with the EC₅₀ of 6.1 ng/mL determined by ELISA.