

Recombinant Human BTLA (hFc Tag)

产品信息

产品名称	产品编号	规格
Recombinant Human BTLA (hFc Tag)	93563ES20	20 µg
	93563ES60	100 µg
	93563ES76	500 µg
	93563ES80	1 mg

产品描述

B- and T-lymphocyte attenuator (BTLA; CD272) is a 35 kDa type I transmembrane glycoprotein in the CD28 family of T cell costimulatory molecules. The ECD of human BTLA shares 42% and 44% aa identity with that of mouse and rat BTLA, respectively. BTLA is also unusual in its interaction with the TNF superfamily member HVEM rather than with B7 family ligands. BTLA is expressed on T cells, B cells, macrophages, dendritic cells, and NK cells. Its expression is low in naïve T cells and increases during antigen-specific induction of anergy. In B cells, BTLA expression is highest in mature naïve cells. BTLA apparently limits T cell numbers, since its deletion results in overproduction of T cells, especially CD8+ memory T cells that are hyper-responsive to TCR crosslinking.

产品性质

别名 (Synonyms)	CD272, BTLA, BTLA1, FLJ16065, MGC129743
Uniprot No.	Q7Z6A9-1
表达区间及表达系统 (Source)	Recombinant Human BTLA Protein is expressed from HEK293 Cells with hFc tag at the C-terminal. It contains Lys31-Ser150.
分子量(Molecular Weight)	Approximately 40.5 kDa. Due to glycosylation, the protein migrates to 60-70 kDa based on Tris-Bis PAGE result.
外观(Physical Appearance)	Sterile Filtered White lyophilized (freeze-dried) powder.
纯度 (Purity)	> 95% as determined by SDS-PAGE and HPLC
活性 (Activity)	<p>1. ELISA Data: Immobilized Human HVEM, His Tag at 2 µg/mL (100 µL/Well) on the plate. Dose response curve for Human BTLA, hFc Tag with the EC₅₀ of 19.9 ng/mL determined by ELISA.</p> <p>2. ELISA Data: Immobilized Human BTLA, hFc Tag at 0.2 µg/mL (100 µL/Well) on the plate. Dose response curve for Biotinylated Anti-BTLA Antibody, hFc Tag with the EC₅₀ of 12.9 ng/mL determined by ELISA.</p>
内毒素 (Endotoxin)	< 1.0 EU per 1µg of the protein by the LAL method.
制剂 (Formulation)	Lyophilized from 0.22 µm filtered solution in PBS (pH 7.4). Normally 5% trehalose is added as protectant before lyophilization.
复溶 (Reconstitution)	Centrifuge tubes before opening. Reconstituting to a concentration more than 100 µg/mL is recommended (usually we use 1 mg/mL solution for lyophilization). Dissolve the lyophilized protein in distilled water.

运输与保存方法

冰袋运输。-20°C至-80°C保存，一年有效期。

复溶后，-20 至 -80°C，在未开封状态下保存 3-6 个月。复溶后，2-8°C 保存 2-7 天。

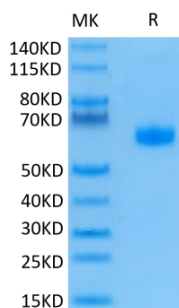
建议第一次使用时分装冻存，避免反复冻融。

注意事项

1. 避免反复冻融。
2. 为了您的安全和健康，请穿实验服并戴一次性手套操作。
3. 本产品仅作科研用途！

产品数据

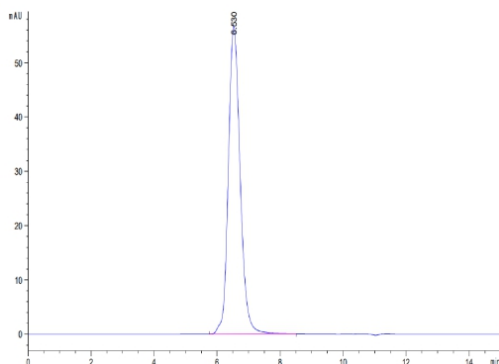
Tris-Bis PAGE



Human BTLA on Tris-Bis PAGE under reduced condition.

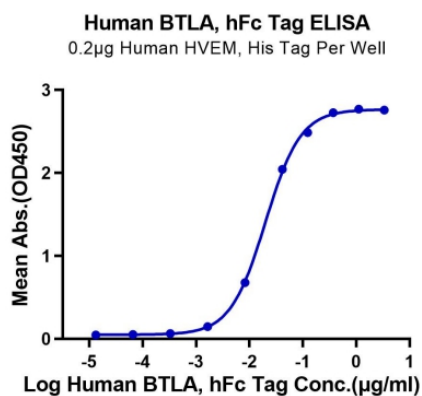
The purity is greater than 95%.

SEC-HPLC



The purity of Human BTLA is greater than 95% as determined by SEC-HPLC.

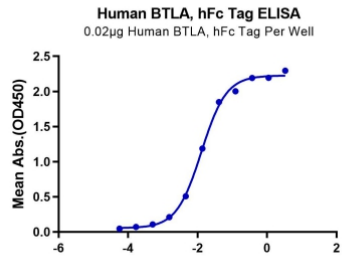
ELISA Data



Immobilized Human HVEM, His Tag at 2 μ g/mL (100 μ L/Well) on the plate. Dose response curve for Human BTLA, hFc Tag with the EC_{50} of 19.9 ng/mL determined by ELISA.

ELISA Data

Log Human BTLA, hFc Tag Conc.($\mu\text{g/ml}$)



Log Biotinylated Anti-BTLA Antibody, hFc Tag Conc.($\mu\text{g/ml}$)

Immobilized Human BTLA, hFc Tag at 0.2 $\mu\text{g/ml}$ (100 μL /Well) on the plate. Dose response curve for Biotinylated Anti-BTLA Antibody, hFc Tag with the EC_{50} of 12.9 ng/ml determined by ELISA.