

## Recombinant Human DNAM-1/CD226 (hFc Tag)

### 产品信息

产品名称	产品编号	规格
Recombinant Human DNAM-1/CD226 (hFc Tag)	93568ES20	20 µg
	93568ES60	100 µg
	93568ES76	500 µg
	93568ES80	1 mg

### 产品描述

DNAM-1 (DNAM-1), also known as CD226, is a 65 kDa type I transmembrane glycoprotein in the immunoglobulin superfamily. Mature human DNAM-1 contains a 236 amino acid (aa) extracellular domain (ECD) with two Ig-like C2-set domains and a 61 aa cytoplasmic region that contains motifs for binding PDZ domains and band 4.1 family proteins. Within the ECD, human DNAM-1 shares 50% and 52% aa sequence identity with mouse and rat DNAM-1, respectively. DNAM-1 is expressed on multiple lymphoid and myeloid cells and interacts with CD155/PVR and Nectin-2/CD112. Ligation of DNAM-1 promotes the activation of NK cells, CD8+ T cells, and mast cells, dendritic cell maturation, megakaryocyte and activated platelet adhesion to vascular endothelial cells, and monocyte extravasation; it inhibits the formation of osteoclasts. Platelet-endothelium interactions mediated by DNAM-1 enable the metastasis of tumor cells to the lung. In activated, but not in resting NK, T, and mast cells, the *cis* association of DNAM-1 with CD18 contributes to the tyrosine and serine phosphorylation of DNAM-1 during activation.

### 产品性质

别名 (Synonyms)	CD226 molecule; CD226; DNAM1; PTA1; TLISA1
Uniprot No.	Q15762
表达区间及表达系统 (Source)	Recombinant Human DNAM-1/CD226 Protein is expressed from HEK293 Cells with hFc tag at the C-terminal. It contains Glu19-Asn247.
分子量(Molecular Weight)	The protein has a predicted MW of 52.8 kDa. Due to glycosylation, the protein migrates to 70-100 kDa based on Tris-Bis PAGE result.
外观(Physical Appearance)	Sterile Filtered White lyophilized (freeze-dried) powder.
纯度 (Purity)	> 95% as determined by SDS-PAGE and HPLC
活性 (Activity)	<p><b>1.ELISA Data:</b> Immobilized Human CD155, His Tag at 5µg/ml (100µl/Well) on the plate. Dose response curve for Human DNAM-1/CD226, hFc Tag with the EC<sub>50</sub> of 1.8µg/ml determined by ELISA.</p> <p><b>2.SPR Data:</b> Human DNAM-1, hFc Tag captured on CM5 Chip via Protein A can bind Rhesus macaque CD155, His Tag with an affinity constant of 0.234 µM as determined in SPR assay</p>
内毒素 (Endotoxin)	< 1.0 EU per 1µg of the protein by the LAL method.
制剂 (Formulation)	Lyophilized from 0.22 µm filtered solution in PBS (pH 7.4). Normally 5% trehalose is added as protectant before lyophilization.
复溶 (Reconstitution)	Centrifuge tubes before opening. Reconstituting to a concentration more than 100 µg/mL is recommended (usually we use 1 mg/mL solution for lyophilization). Dissolve the lyophilized protein in distilled water.

## 运输与保存方法

冰袋运输。-20°C至-80°C保存，一年有效期。

复溶后，-20 至 -80°C，在未开封状态下保存 3-6 个月。复溶后，2-8°C 保存 2-7 天。

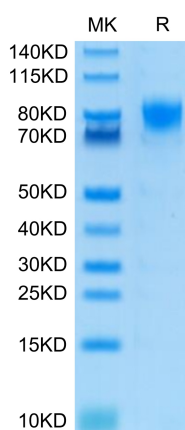
建议第一次使用时分装冻存，避免反复冻融。

## 注意事项

1. 避免反复冻融。
2. 为了您的安全和健康，请穿实验服并戴一次性手套操作。
3. 本产品仅作科研用途！

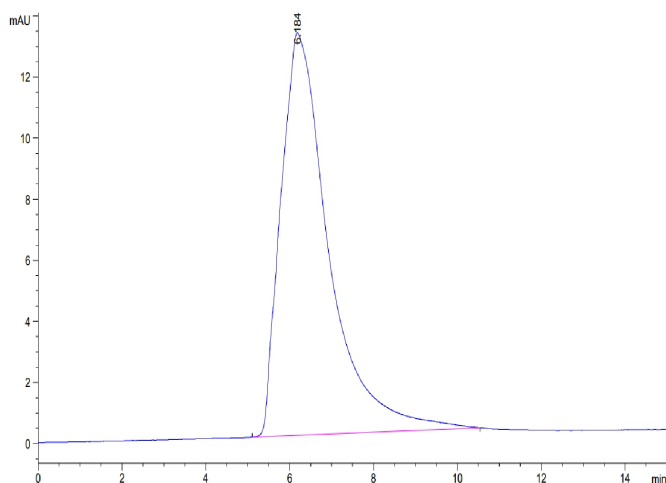
## 产品数据

### Tris-Bis PAGE



Human DNAM-1/CD22 on Tris-Bis PAGE under reduced conditions. The purity is greater than 95%.

### SEC-HPLC

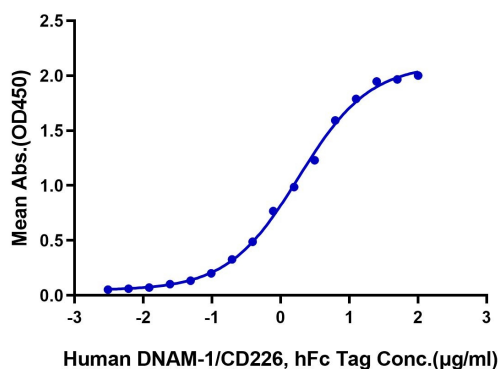


The purity of Human DNAM-1/CD226 is greater than 95% as determined by SEC-HPLC.

## ELISA Data

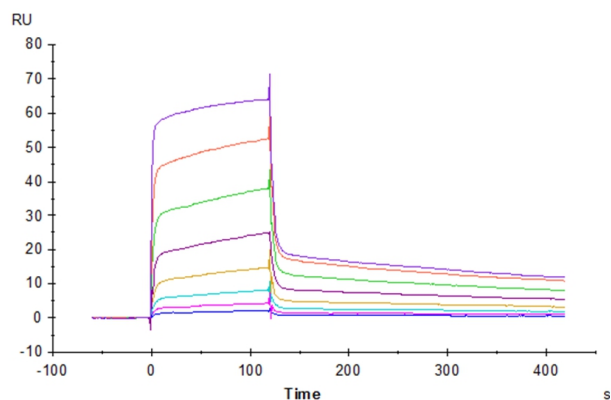
### Human DNAM-1/CD226, hFc Tag ELISA

0.5µg Human CD155, His Tag Per Well



Immobilized Human CD155, His Tag at 5µg/ml (100µl/Well) on the plate. Dose response curve for Human DNAM-1/CD226, hFc Tag with the  $EC_{50}$  of 1.8µg/ml determined by ELISA.

## SPR Data



Human DNAM-1, hFc Tag captured on CM5 Chip via Protein A can bind Rhesus macaque CD155, His Tag with an affinity constant of 0.234 µM as determined in SPR assay (Biacore T200).