

Recombinant Human HVEM/TNFRSF14 (His Tag)

产品信息

产品名称	产品编号	规格
Recombinant Human HVEM/TNFRSF14 (His Tag)	93555ES20	20 µg
	93555ES60	100 µg
	93555ES76	500 µg
	93555ES80	1 mg

产品描述

HVEM (herpesvirus entry mediator), also known as TNFRSF14 and CD270, is a type I membrane protein in the TNF receptor superfamily, and it can both promote and inhibit T cell activity. Mature human HVEM consists of a 164 aa extracellular domain (ECD) with three cysteine-rich domains (CRD), a 21 aa transmembrane segment, and a 60 aa cytoplasmic tail with a TRAF interaction domain. Within the ECD, human HVEM shares 55% aa sequence identity with mouse and rat HVEM. Alternative splicing generates an additional isoform with a substitution of the N-terminal 10 amino acids including the signal peptide. HVEM is highly expressed on naïve CD4⁺ T cells, CD8⁺ T memory cells, regulatory T cells, dendritic cells, monocytes, and neutrophils. Its expression declines during effector T cell activation but is up-regulated during Treg activation. HVEM functions as a receptor for BTLA, CD160, LIGHT/TNFSF14, and Lymphotoxin-alpha.

产品性质

别名 (Synonyms)	CD270; CD40-like protein; HVEM; LIGHTR; ATAR; TNFRSF14; TR2
Uniprot No.	Q92956-1
表达区间及表达系统 (Source)	Recombinant Human HVEM/TNFRSF14 Protein is expressed from HEK293 Cells with His tag at the C-terminal. It contains Leu39-Val202.
分子量(Molecular Weight)	The protein has a predicted MW of 18.5 kDa. Due to glycosylation, the protein migrates to 32-48 kDa based on Tris-Bis PAGE result.
外观(Physical Appearance)	Sterile Filtered White lyophilized (freeze-dried) powder.
纯度 (Purity)	> 95% as determined by SDS-PAGE and HPLC
活性 (Activity)	<p>1.ELISA Data: Immobilized Human HVEM, His Tag at 2µg/ml (100µl/Well) on the plate. Dose response curve for Human BTLA, hFc Tag with the EC₅₀ of 19.9ng/ml determined by ELISA.</p> <p>2.ELISA Data: Immobilized Human HVEM, His Tag at 2µg/ml (100µl/Well) on the plate. Dose response curve for Human CD160, hFc Tag with the EC₅₀ of 0.44µg/ml determined by ELISA.</p> <p>3.ELISA Data: Immobilized Human HVEM, His Tag at 1µg/ml (100µl/Well) on the plate. Dose response curve for Human LIGHT, hFc Tag with the EC₅₀ of 14.2ng/ml determined by ELISA.</p>
内毒素 (Endotoxin)	< 1.0 EU per 1µg of the protein by the LAL method.
制剂 (Formulation)	Lyophilized from 0.22 µm filtered solution in PBS (pH 7.4). Normally 5% trehalose is added as protectant before lyophilization.

复溶 (Reconstitution)

Centrifuge tubes before opening. Reconstituting to a concentration more than 100 µg/mL is recommended (usually we use 1 mg/mL solution for lyophilization). Dissolve the lyophilized protein in distilled water.

运输与保存方法

冰袋运输。-20°C至-80°C保存，一年有效期。

复溶后，-20 至 -80°C，在未开封状态下保存 3-6 个月。复溶后，2-8°C 保存 2-7 天。

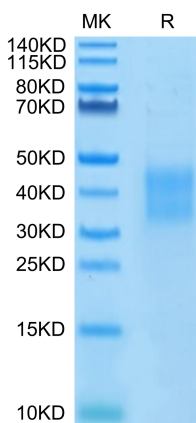
建议第一次使用时分装冻存，避免反复冻融。

注意事项

1. 避免反复冻融。
2. 为了您的安全和健康，请穿实验服并戴一次性手套操作。
3. 本产品仅作科研用途！

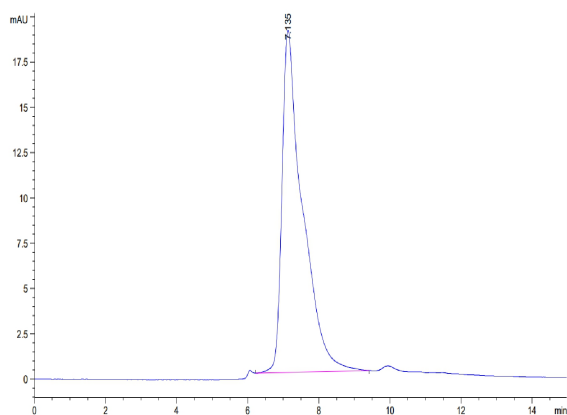
产品数据

Tris-Bis PAGE



Human HVEM on Tris-Bis PAGE under reduced conditions. The purity is greater than 95%.

SEC-HPLC

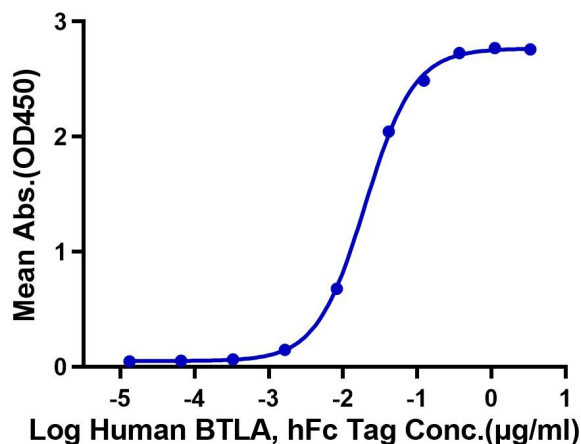


The purity of Human HVEM is greater than 95% as determined by SEC-HPLC.

ELISA Data

Human HVEM, His Tag ELISA

0.2µg Human HVEM, His Tag Per Well

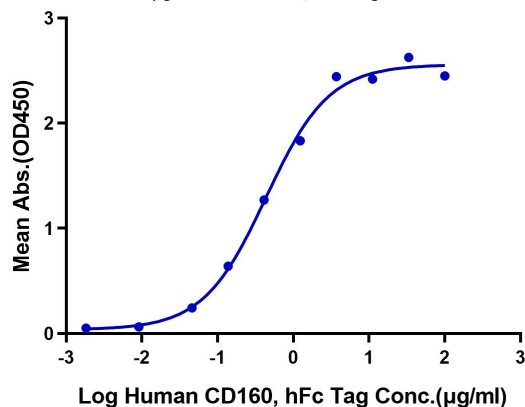


Immobilized Human HVEM, His Tag at 2µg/ml (100µl/Well) on the plate. Dose response curve for Human BTLA, hFc Tag with the EC₅₀ of 19.9ng/ml determined by ELISA.

ELISA Data

Human HVEM, His Tag ELISA

0.2µg Human HVEM, His Tag Per Well

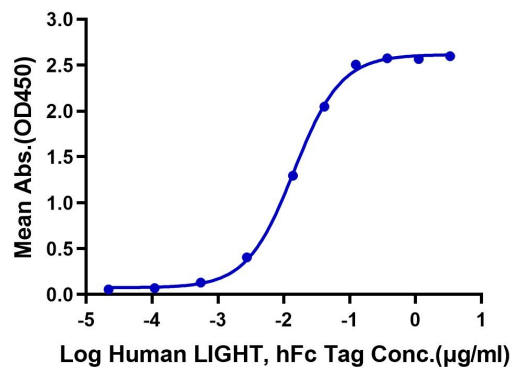


Immobilized Human HVEM, His Tag at 2µg/ml (100µl/Well) on the plate. Dose response curve for Human CD160, hFc Tag with the EC₅₀ of 0.44µg/ml determined by ELISA.

ELISA Data

Human HVEM, His Tag ELISA

0.2µg Human HVEM, His Tag Per Well



Immobilized Human HVEM, His Tag at 1µg/ml (100µl/Well) on the plate. Dose response curve for Human LIGHT, hFc Tag with the EC₅₀ of 14.2ng/ml determined by ELISA.