

Recombinant Human CTLA-4/CD152 (His Tag)

产品信息

产品名称	产品编号	规格
Recombinant Human CTLA-4/CD152 (His Tag)	93553ES20	20 µg
	93553ES60	100 µg
	93553ES76	500 µg
	93553ES80	1 mg

产品描述

CTLA-4 (cytotoxic T-lymphocyte associated protein-4, designated CD152), is a type I transmembrane T cell inhibitory molecule that is a member of the Ig superfamily. Human or mouse CTLA-4 cDNA encodes 223 amino acids (aa) including a 35 aa signal sequence, a 126 aa extracellular domain (ECD) with one Ig-like V-type domain, a 21 aa transmembrane (TM) sequence, and a 41 aa cytoplasmic sequence. It is found as a covalent homodimer of 41-43 kDa. Within the ECD, human CTLA-4 shares 68%, 71% and 83-86% aa sequence identity with mouse, rat and porcine/bovine/rabbit/feline/canine CTLA-4, respectively. A 174 aa form that lacks TM and cytoplasmic sequences (sCTLA-4) is possibly secreted (3-5). Isoforms of 56-79 aa that mainly contain parts of the cytoplasmic domain are reported. In mouse, an isoform lacking the Ig-like domain has ligand-independent inhibitory activity and is termed liCTLA-4. CD28, which is structurally related to CTLA-4, is constitutively expressed on naïve T cells and promotes T cell activation when engaged by B7-2 on antigen-presenting cells (APC) within the immunological synapse (IS). In contrast, CTLA-4 is recruited from intracellular vesicles to the IS beginning 1-2 days after T cell activation.

产品性质

别名 (Synonyms)	CTLA4; CD152; ICOS; CELIAC3; GRD4; GSE; ALPS5; IDDM12
Uniprot No.	P16410-1
表达区间及表达系统 (Source)	Recombinant Human CTLA-4/CD152 Protein is expressed from HEK293 Cells with His tag at the C-terminal. It contains Lys36-Asp161.
分子量(Molecular Weight)	The protein has a predicted MW of 14.3 kDa. Due to glycosylation, the protein migrates to 28-35 kDa based on Tris-Bis PAGE result.
外观(Physical Appearance)	Sterile Filtered White lyophilized (freeze-dried) powder.
纯度 (Purity)	> 95% as determined by SDS-PAGE and HPLC 1.ELISA Data: Immobilized Human CTLA-4, His Tag at 0.5µg/ml (100µl/Well) on the plate. Dose response curve for Anti-CTLA-4 Antibody, hFc Tag with the EC ₅₀ of 20.1ng/ml determined by ELISA.
活性 (Activity)	2.ELISA Data: Immobilized Human B7-1, hFc Tag at 0.5µg/ml (100µl/Well) on the plate. Dose response curve for Human CTLA-4, His Tag with the EC ₅₀ of 66ng/ml determined by ELISA.
内毒素 (Endotoxin)	< 1.0 EU per 1µg of the protein by the LAL method.
制剂 (Formulation)	Lyophilized from 0.22 µm filtered solution in PBS (pH 7.4). Normally 5% trehalose is added as protectant before lyophilization.
复溶 (Reconstitution)	Centrifuge tubes before opening. Reconstituting to a concentration more than 100 µg/mL is recommended (usually we use 1 mg/mL solution for lyophilization). Dissolve the lyophilized protein in distilled water.

运输与保存方法

冰袋运输。-20°C至-80°C保存，一年有效期。

复溶后，-20 至 -80°C，在未开封状态下保存 3-6 个月。复溶后，2-8°C 保存 2-7 天。

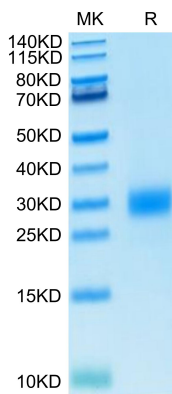
建议第一次使用时分装冻存，避免反复冻融。

注意事项

1. 避免反复冻融。
2. 为了您的安全和健康，请穿实验服并戴一次性手套操作。
3. 本产品仅作科研用途！

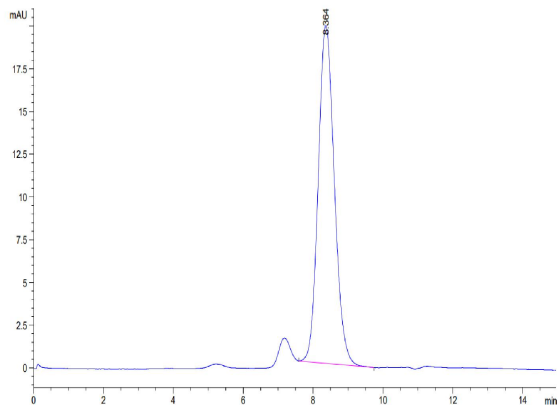
产品数据

Tris-Bis PAGE



Human CTLA-4 on Tris-Bis PAGE under reduced conditions. The purity is greater than 95%.

SEC-HPLC

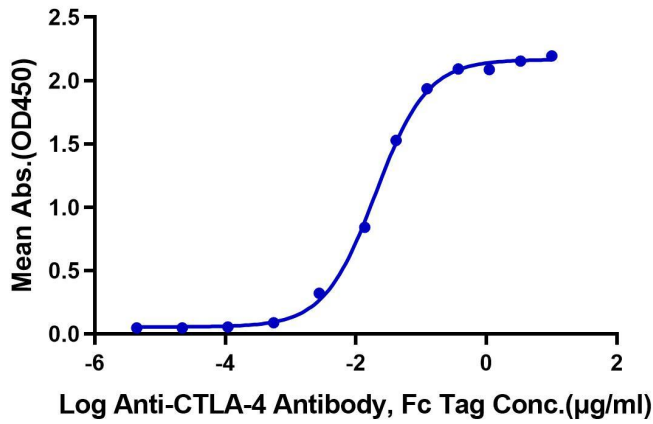


The purity of Human CTLA-4 is greater than 95% as determined by SEC-HPLC.

ELISA Data

Human CTLA-4, His Tag ELISA

0.05 μ g Human CTLA-4, His Tag Per Well

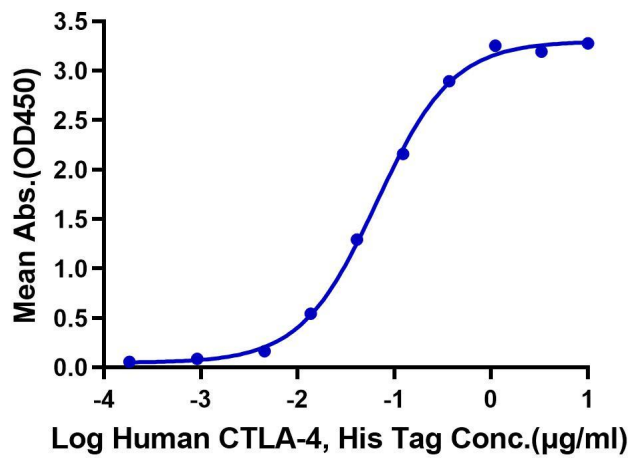


Immobilized Human CTLA-4, His Tag at 0.5 μ g/ml (100 μ l/Well) on the plate. Dose response curve for Anti-CTLA-4 Antibody, hFc Tag with the EC₅₀ of 20.1ng/ml determined by ELISA.

ELISA Data

Human CTLA-4, His Tag ELISA

0.05 μ g Human B7-1, hFc Tag Per Well



Immobilized Human B7-1, hFc Tag at 0.5 μ g/ml (100 μ l/Well) on the plate. Dose response curve for Human CTLA-4, His Tag with the EC₅₀ of 66ng/ml determined by ELISA.