

## p21 Rabbit pAb

### 产品信息

| 产品名称           | 产品编号      | 规格          |
|----------------|-----------|-------------|
| p21 Rabbit pAb | 30024ES50 | 50 $\mu$ L  |
|                | 30024ES60 | 100 $\mu$ L |

### 产品描述

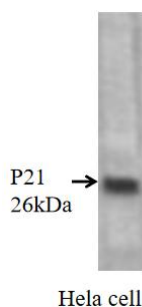
该基因编码一种有效的细胞周期蛋白依赖激酶抑制剂。编码的蛋白结合并抑制细胞周期蛋白依赖的激酶 2 或-细胞周期蛋白依赖的激酶 4 复合物的活性，因此在 G1 时作为细胞周期进程的调节剂。该基因的表达受到肿瘤抑制蛋白 p53 的严格控制，该蛋白通过该蛋白介导 p53 依赖的细胞周期 G1 期阻滞，以应对各种应激刺激。该蛋白可与增殖的细胞核抗原(DNA 聚合酶辅助因子)相互作用，在 S 期 DNA 复制和 DNA 损伤修复中发挥调节作用。据报道，该蛋白被 casp3 样 caspases 特异性切割，从而导致细胞周期蛋白依赖的激酶 2 的显著激活，并可能在 caspase 激活后细胞凋亡的执行中起作用。缺乏这种基因的老鼠具有再生受损或缺失组织的能力。该基因已发现多个交替剪接变异。

### 产品性质

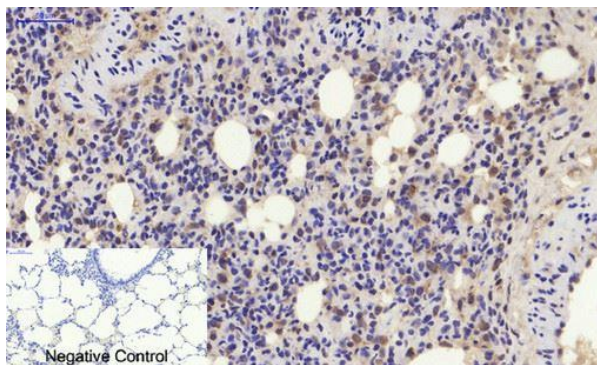
|              |   |
|--------------|---|
| 别名           | CDKN1A; CAP20; CDKN1; CIP1; MDA6; PIC1; SD11; WAF1; Cyclin-dependent kinase inhibitor 1; CDK-interacting protein 1; Melanoma differentiation-associated protein 6; MDA-6; p21 |
| SwissProt ID | P38936  |
| 基因 ID        | 1026  |
| 免疫原          | The antiserum was produced against synthesized peptide derived from human p21 Cip1.AA range:111-160   |
| 缓冲液          | Liquid in PBS containing 50% glycerol, 0.5% BSA and 0.02% sodium azide, pH 7.3  |
| 分子量          | Observed MW (kDa):26  |
| 克隆类型         | Polyclonal Antibody   |
| 亚型           | IgG   |
| 宿主           | Rabbit  |
| 物种反应         | Human,Mouse,Rat   |
| 纯化方式         | Affinity Purified   |
| 细胞定位         | Cytoplasm,Nucleus   |

### 应用

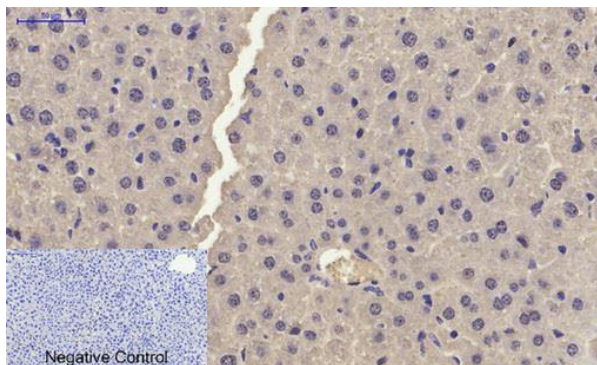
稀释比 WB: 1/500-1/2000 IHC: 1/100-1/300 IF: 1/200-1/1000 ELISA: 1/20000



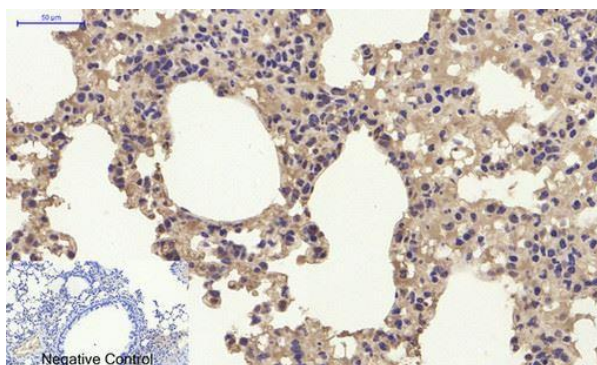
Western Blot analysis of various cells using p21 Polyclonal Antibody



Immunohistochemical analysis of paraffin-embedded Rat-lung tissue. 1,p21 Polyclonal Antibody was diluted at 1:2 (4°C,overnight). 2, Sodium citrate pH 6. was used for antibody retrieval (>98°C,2min). 3,Secondary antibody was diluted at 1:2 (room temperature, 3min).Negative control was used by secondary antibody only



Immunohistochemical analysis of paraffin-embedded Mouse-liver tissue. 1,p21 Polyclonal Antibody was diluted at 1:200 (4°C,overnight) . 2, Sodium citrate pH 6.0 was used for antibody retrieval (>98°C,20min). 3,Secondary antibody was diluted at 1:200(room temperature, 30min). Negative control was used by secondary antibody only.



Immunohistochemical analysis of paraffin-embedded Mouse-lung tissue. 1,p21 Polyclonal Antibody was diluted at 1:200(4°C,overnight). 2, Sodium citrate pH 6.0 was used for antibody retrieval (>98°C,20min). 3,Secondary antibody was diluted at 1:200 (room temperature, 30min). Negative control was used by secondary antibody only.

## 运输与保存方法

冰袋运输。-20°C保存，1年有效期。

## 注意事项

1. 避免反复冻融。
2. 为了您的安全和健康，请穿实验服并戴一次性手套操作。
3. 本产品仅作科研用途！