

## Lamin B1 Mouse mAb

### 产品信息

Product Name	Cat#	Size
Lamin B1 Mouse mAb	30003ES50	50ul
	30003ES60	100uL

### 产品描述

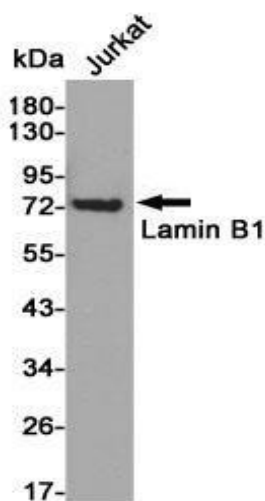
该基因编码两种 b 型膜蛋白之一，是核膜的组成部分。该基因的重复与常染色体显性成人发病脑白质营养不良 (ADLD) 有关。选择性剪接导致多种转录变体。

### 产品性质

别名	ADLD, LMB1, LMNB1, MGC111419, OTTHUMP00000159218
SwissProt ID	P20700
基因 ID	4001
免疫原	Purified recombinant protein fragments expressed in E.coli.
缓冲液	Liquid in PBS containing 50% glycerol, 0.5% BSA and 0.02% sodium azide, pH 7.3.
分子量	Observed MW (kDa):68
克隆类型	Monoclonal Antibody
亚型	IgG1
宿主	Mouse
物种反应	Human,Mouse,Rat
纯化方式	Affinity Purified

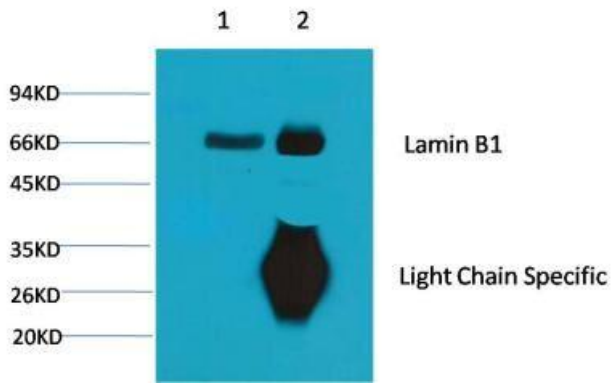
### Application

Dilution RatioWB: 1/2000-5000 IP: 1/200 IF: 1/200 IHC: 1/50-300

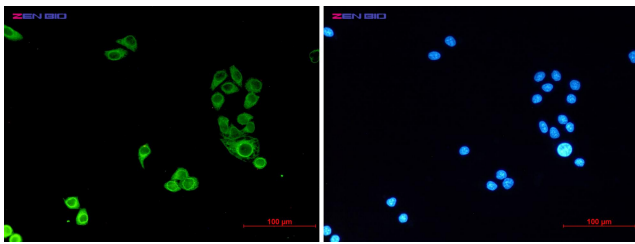


Western blot detection of Lamin B1 in Jurkat cell lysates using Lamin B1 mouse mAb (1:500 diluted).

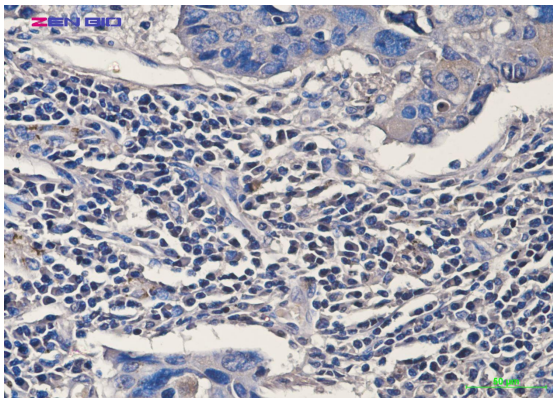
Predicted band size:68kDa.Observed band size:68kDa.



1uL Input: Mouse Brain Tissue Lysate 2u3001IP product: IP dilute 1:200 Western blot analysis: primary antibody : 1:5,000  
Secondary antibody: Goat anti-Mouse IgG, Lightchain specific(S003), 1:5,000



Immunocytochemistry of Lamin B1 (green) in HeLa using Lamin B1 antibody at dilution 1/20, and DAPI(blue)



Immunohistochemical of Lamin B1 (9B10) in Human lung cancer tissue using Lamin B1 antibody at dilution 1/20.

## 运输与保存方法

冰袋运输。-20°C保存，1年有效期。

1. 避免反复冻融。
2. 为了您的安全和健康，请穿实验服并戴一次性手套操作。
3. 本产品仅作科研用途！