

Recombinant Human Siglec2/CD22 (His Tag)

产品信息

产品名称	产品编号	规格
Recombinant Human Siglec2/CD22 (His Tag)	93102ES20	20 µg
	93102ES60	100 µg
	93102ES76	500 µg
	93102ES80	1 mg

产品描述

Siglec-2, also known as B-cell antigen CD22 or B-lymphocyte cell adhesion molecule (BL-CAM), is a B-cell restricted glycoprotein that is expressed in the cytoplasm of progenitor B and pre-B cells and on the surface of mature B cells. The predominant Siglec-2/CD22 beta encodes an 847 amino acid (aa) polypeptide with a hydrophobic signal peptide, an N-terminal Ig-like V-type domain, six Ig-like C2-type domains, a transmembrane region and a cytoplasmic tail with 4 immunoreceptor tyrosine-based inhibition motifs (ITIMs). Siglec-2/CD22 is a coreceptor that physically interacts with B-cell receptor (BCR) and is rapidly phosphorylated upon BCR ligation. It negatively regulates BCR signals by recruiting tyrosine phosphatase SHP-1 to its ITIMs. Phosphorylated Siglec-2/CD22 can also interact with other intracellular effector proteins such as Syk, PLC gamma, PI3 kinase and Grb-2, suggesting it may play a role in positive signaling.

产品性质

别名 (Synonyms)	CD22 molecule, Siglec-2, B-cell receptor CD22, BL-CAM, SIGLEC2, SIGLEC2FLJ22814
Uniprot No.	P20273-1
表达区间及表达系统 (Source)	HEK293 Cells-derived Human Siglec-2 / CD22 Protein, Asp20-Arg687 with His tag at the C-terminal
分子量(Molecular Weight)	Approximately 76.2 kDa. Due to glycosylation, the protein migrates to 100-120 kDa based on Tris-Bis PAGE result.
外观(Physical Appearance)	Sterile Filtered White lyophilized (freeze-dried) powder.
纯度 (Purity)	> 95% as determined by SDS-PAGE and HPLC
活性 (Activity)	ELISA Data: Immobilized Human Siglec-2, His Tag at 0.5 µg/mL (100 µL/well) on the plate. Dose response curve for Anti-Siglec-2 Antibody, hFc Tag with the EC ₅₀ of 19.1 ng/mL determined by ELISA.
内毒素 (Endotoxin)	< 1.0 EU per 1µg of the protein by the LAL method.
制剂 (Formulation)	Lyophilized from 0.22 µm filtered solution in PBS (pH 7.4). Normally 5% trehalose is added as protectant before lyophilization.
复溶 (Reconstitution)	Centrifuge tubes before opening. Reconstituting to a concentration more than 100 µg/mL` is recommended (usually we use 1mg/mL solution for lyophilization). Dissolve the lyophilized protein in distilled water.

运输与保存方法

冰袋运输。-20°C至-80°C保存，一年有效期。

复溶后，-20 至 -80°C，在未开封状态下保存 3-6 个月。复溶后，2-8°C 保存 2-7 天。

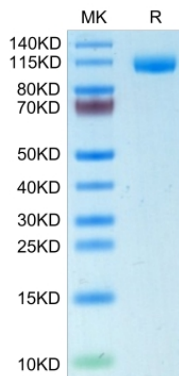
建议第一次使用时分装冻存，避免反复冻融。

注意事项

1. 避免反复冻融。
2. 为了您的安全和健康，请穿实验服并戴一次性手套操作。
3. 本产品仅作科研用途！

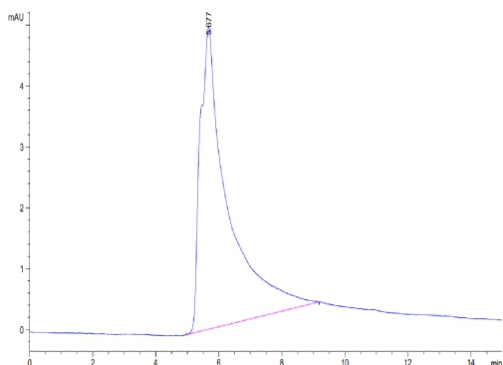
产品数据

Tris-Bis PAGE



Human Siglec-2/CD22 on Tris-Bis PAGE under reduced condition. The purity is greater than 95%.

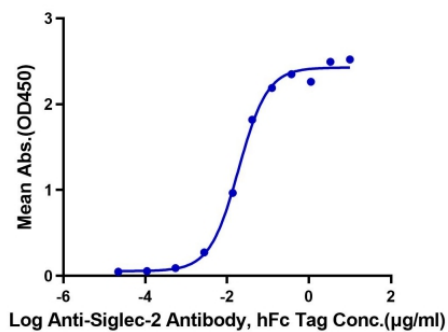
SEC-HPLC



The purity of Human Siglec-2/CD22 is greater than 95% as determined by SEC-HPLC.

ELISA Data

Human Siglec-2, His Tag ELISA
0.05 μ g Human Siglec-2, His Tag Per Well



Immobilized Human Siglec-2, His Tag at 0.5 μ g/mL (100 μ L/well) on the plate. Dose response curve for Anti-Siglec-2 Antibody, hFc Tag with the EC_{50} of 19.1 ng/mL determined by ELISA.