

## Recombinant Human MSLN/Mesothelin (hFc Tag)

### 产品信息

产品名称	产品编号	规格
Recombinant Human MSLN/Mesothelin (hFc Tag)	93101ES20	20 µg
	93101ES60	100 µg
	93101ES76	500 µg
	93101ES80	1 mg

### 产品描述

Mesothelin, also known as CAK1 and ERC, is derived from a 70 kDa precursor that also includes Megakaryocyte Potentiating Factor (MPF). MPF is a cytokine that potentiates IL-3 induced megakaryocyte colony formation. This recombinant human Mesothelin lacks the 8 aa insertion, and within aa 296-580 it shares 59% sequence identity with mouse and rat Mesothelin. Mesothelin is normally expressed on mesothelial cells in the pleura, pericardium, and peritoneum as well as in the developing and postnatal pancreas. It is up-regulated in mesotheliomas and a range of carcinomas and adenomas. Mesothelin promotes tumor cell proliferation, migration, anchorage-independent growth, and tumor progression.

### 产品性质

别名 (Synonyms)	MSLN, CAK1, Mesothelin, MPF, MPFSMRP, SMR
Uniprot No.	Q13421-2
表达区间及表达系统 (Source)	HEK293 Cells-derived Human MSLN/Mesothelin Protein, Glu296-Asp580 with hFc tag at the C-terminal
分子量(Molecular Weight)	Approximately 59.0 kDa. Due to glycosylation, the protein migrates to 68-78 kDa based on Tris-Bis PAGE result.
外观(Physical Appearance)	Sterile Filtered White lyophilized (freeze-dried) powder.
纯度 (Purity)	> 95% as determined by SDS-PAGE and HPLC
活性 (Activity)	<p><b>1.ELISA Data:</b> Immobilized Human CA125, His Tag at 2 µg/mL (100 µL/Well) on the plate. Dose response curve for Human MSLN, hFc Tag with the EC<sub>50</sub> of 2.8 µg/mL determined by ELISA.</p> <p><b>2.ELISA Data:</b> Immobilized Human MSLN at 0.5 µg/mL (100 µL/well) on the plate. Dose response curve for Biotinylated Anti-MSLN Antibody, hFc Tag with the EC<sub>50</sub> of 29.2 ng/mL determined by ELISA.</p>
内毒素 (Endotoxin)	< 1.0 EU per 1µg of the protein by the LAL method.
制剂 (Formulation)	Lyophilized from 0.22 µm filtered solution in PBS (pH 7.4). Normally 5% trehalose is added as protectant before lyophilization.
复溶 (Reconstitution)	Centrifuge tubes before opening. Reconstituting to a concentration more than 100 µg/mL is recommended (usually we use 1mg/mL solution for lyophilization). Dissolve the lyophilized protein in distilled water.

### 运输与保存方法

冰袋运输。-20°C至-80°C保存，一年有效期。

复溶后，-20 至 -80°C，在未开封状态下保存 3-6 个月。复溶后，2-8°C 保存 2-7 天。

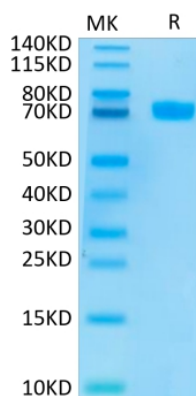
建议第一次使用时分装冻存，避免反复冻融。

## 注意事项

1. 避免反复冻融。
2. 为了您的安全和健康，请穿实验服并戴一次性手套操作。
3. 本产品仅作科研用途！

## 产品数据

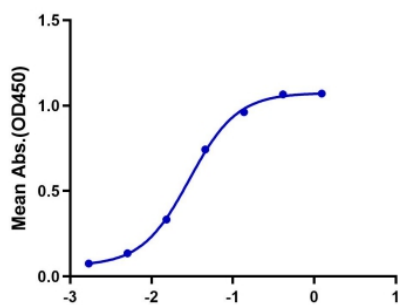
### Tris-Bis PAGE



Human MSLN on Tris-Bis PAGE under reduced conditions.  
The purity is greater than 95%.

### ELISA Data

Human MSLN, hFc Tag ELISA  
0.05 $\mu$ g Human MSLN, hFc Tag Per Well

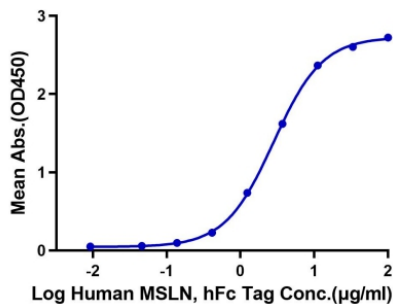


Log Biotinylated Anti-MSLN Ab., hFc Tag Conc.( $\mu$ g/ml)

Immobilized Human MSLN at 0.5  $\mu$ g/mL (100  $\mu$ L/well) on the plate. Dose response curve for Biotinylated Anti-MSLN Antibody, hFc Tag with the EC<sub>50</sub> of 29.2 ng/mL determined by ELISA.

### ELISA Data

Human MSLN, hFc Tag ELISA  
0.2 $\mu$ g Human CA125, His Tag Per Well



Log Human MSLN, hFc Tag Conc.( $\mu$ g/ml)

Immobilized Human CA125, His Tag at 2  $\mu$ g/mL (100  $\mu$ L/Well) on the plate. Dose response curve for Human MSLN, hFc Tag with the EC<sub>50</sub> of 2.8  $\mu$ g/mL determined by ELISA.

HB220629